



# PATENT

## PATENT VIDEO REMOTE SURVEILLANCE

CAMERA ASSISTED AREA SECURITY INDEPENDENT FROM WEATHER,  
SUPPLEMENTING AND/OR REPLACING MANNED GUARDING



# OPTIONAL DEVICE AND SERVICE PROVISION PACKAGES

## IP camera with **infrared sensor alarm**

The camera image assigned to the given zone complements the signal generated by the infrared sensor system when verifying the real alarm if any object, animal or person intrudes into the guarded area.

### ADVANTAGES

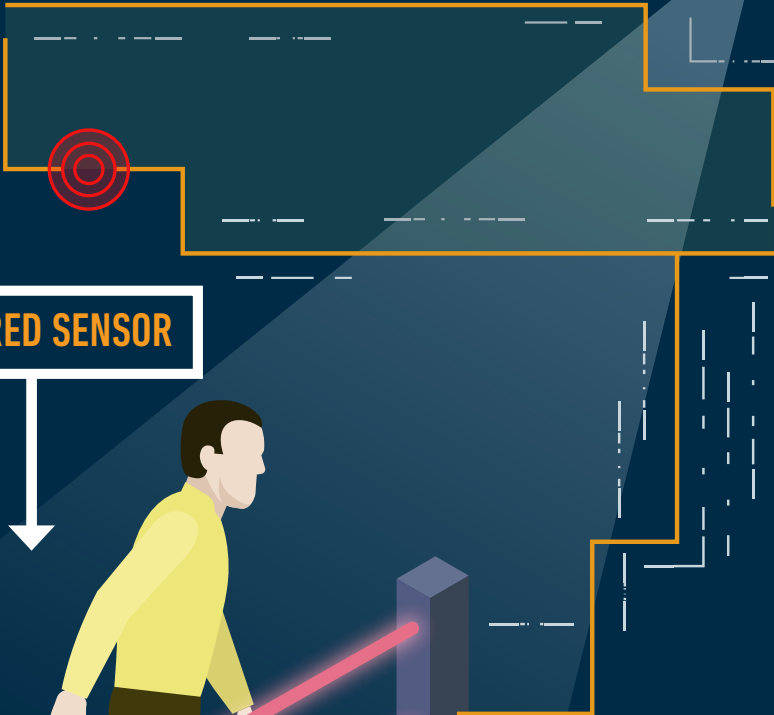
- Uninterrupted system
- Sabotage protected
- 4 MP camera image resolution
- Cameras labelled to fence sectors
- With alarm signal the image of the camera at the given zone can be seen in the monitoring center
- Less expensive compared to other solutions, and the most favorable value for money

### DISADVANTAGES

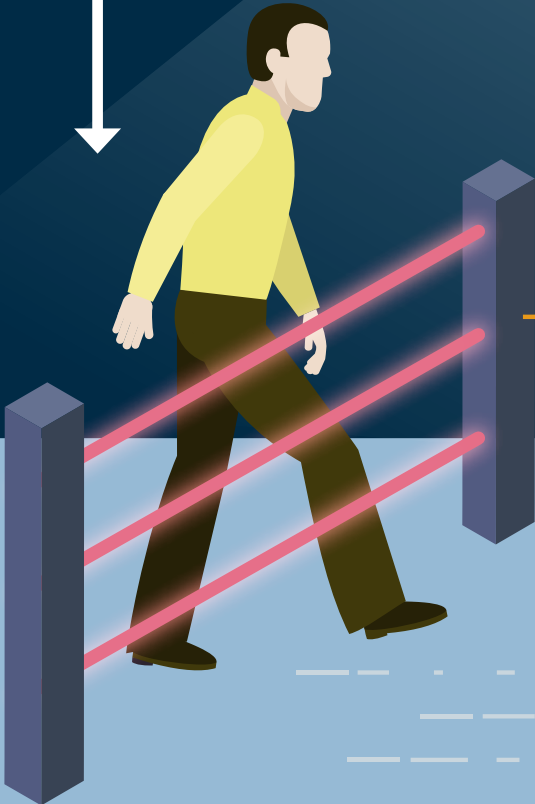
- Bad weather, hard snow and fog influence, i.e. decrease the accuracy of the signal
- Fog may be frozen to the device (heating required)
- Sagging obstacles are to be checked regularly: lawn mowing, shrubs, etc.
- Camera provides less evaluable image under reduced visibility
- Cables run in pipes, but outdoor and are vulnerable therefore
- The device may release signal because of anything (human, animal, vegetation, smoke, etc.)
- Sections of about 50m can be covered
- For installing infrared sensors clearance zones are required

# RELIABLE PROTECTION

IP CAMERA



INFRARED SENSOR



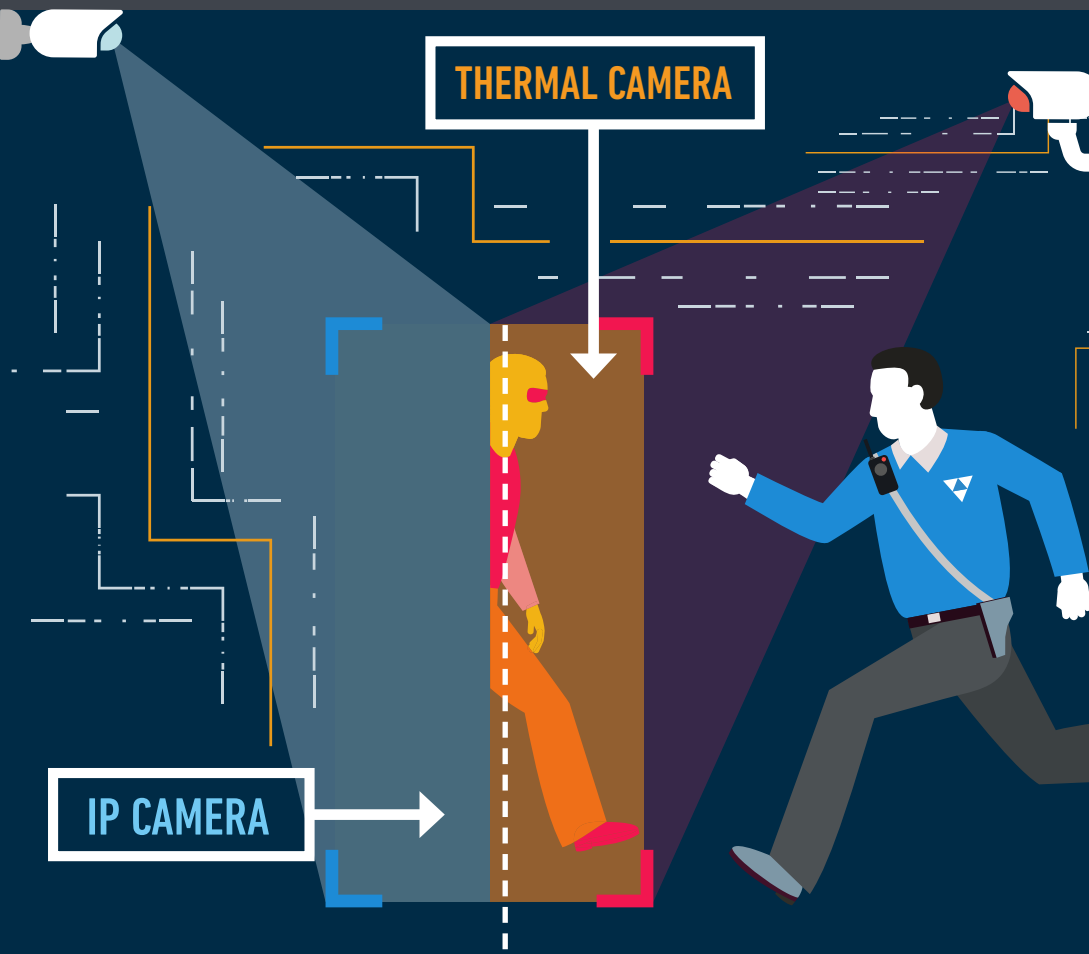
# PERFECT PROTECTION

## Thermal camera with analytics

Camera image is visible irrespectively of the weather conditions and provides identifiable display. Alarm signal is given by the software integrated into the smart thermal camera, based on the designated protected zones.

### ADVANTAGES

- Relatively fast installation
- Camera analytics can be well configured
- Able to distinguish among human, vehicle and animal
- Insubstantial number of false alarms
- Provides evaluable image under bad weather conditions, too
- Long and straight sections can be covered
- In the case of dual camera 4MP real-time image is also provided
- Cameras assigned to fence sections
- During alarm the image of the camera of the given zone appears in the Hikcentral software
- Remotely manageable
- Insensitive to the moving vegetation
- Lowest maintenance requirement
- Recording unit of the locally installed camera records and store each motion change
- The Customer may have access to its system (live image, stored recordings, etc.) also remotely
- Area to be protected can be flexibly adjusted remotely
- May be combined with any alarm system currently available in the site
- Area surveillance either with several zones programmed differently - not only line monitoring
- Courier and motion management over working hours, either taking into consideration the tour management directions
- May be connected up to classic alarm system without laying extra cables
- Partial area can be masked within the guarded area
- Extra functions (warming, taking fire and flame detection)
- Size filters can be set according to the area
- Large scope of products from 10 m to 150 m, with several camera lenses
- Possibility of differentiated control, e.g. #1: a person arrives to the gate, after personal identification the gate is promptly opened, but when a vehicle arrives then the gate either does not open or the system triggers alarm (either also a local lighting signal); e.g. #2: distinguishing between pre-alarm zone management and live alarm zone; e.g. #3: vehicle may pass trough the area, but should not stop and the driver should not leave the vehicle, even so an alarm is triggered.



## DISADVANTAGES

- Higher historical costs as compared to the infrared sensor system, but it returns either after the first year when manned guarding is replaced.

# WHAT IS THE VIDEO REMOTE SURVEILLANCE?

## ACTIVE PROTECTION DEVICE

There are areas and sites where applying uninterrupted manned guarding is either impossible or uneconomic. The up-to-date security devices alone represent passive protection, but they become active protection items by the assistance of the cameras integrated into the system and by applying PATENET VIDEO REMOTE SURVEILLANCE services. Thereby real-time reactions to the emergency events are possible.

## PERFECT ALARM SYSTEM INDEPENDENT FROM WEATHER

Depending on the camera type the video remote surveillance is able identifying the object, animal or person intruding into the designated area.

Images of the cameras are not surveilled continuously. The installed security systems or the camera itself provide signal based on the parameters set in advance, such as displacement of object, change of temperature, intrusion, etc.

The alarm appears at the central monitoring services in form of photo and video – earmarking the alarm-triggering event and the area. The dispatcher takes decision whether there is real danger. If affirmative, then he/she makes the patrol starting ready to intervene within moments, and also notifies the competent authorities.

## EFFECTIVELY APPLICABLE

The video remote surveillance can be successfully applied for achieving cost-efficient guarding in below fields, among others:

- Construction sites
  - temporary depots
- Business sites
- Factory porticos
- Factories
- Institutions
- Private road sections
- Private houses
- Condos
- Car dealerships



# ADVANTAGES OF THE VIDEO REMOTE SURVEILLANCE

## DECREASING MANNED SECURITY JOBS

In most cases it is excellently suitable for replacing human work. More correct and reliable than the human detection.

## FINANCIAL SAVINGS BESIDE KEEPING MAXIMUM SECURITY

The one-time investment can be depreciated as the most up-to-date technics may provide the security either for long years – without manned guarding employed locally.

## REAL-TIME IMAGE CONTENT DISPLAYING THE EXTRAORDINARY EVENT PROMPTLY AND COVERING LARGE AREA

Location of the cameras provides extra overlook (either from 5m height). The patrol guard cannot see e.g. the top of the building in course of its tour. In the case of alarm the images are, however, immediately visible with the monitoring service. The thermal camera system operates efficiently under any weather condition.

## TRAINED INTERVENING STAFF

The staff is composed of licensed security guards, trained interceptors holding gun license.

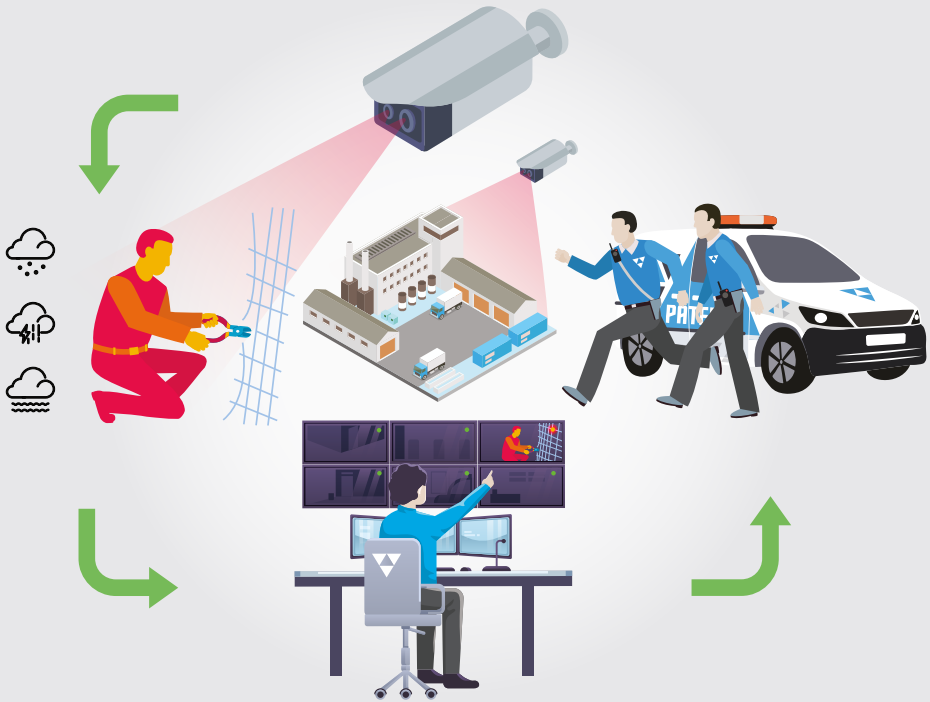
## WHAT IS THE DEVELOPMENT FOCUS?

In the field of property security device development the camera-assisted guarding is the area renewing the fastest. The cameras Patent installed assist the performance of the staff with the most up-to-date hardware and software monitored either by mobile apps tailored to special requirements. AI-based developments can be also integrated.

## LEASE ALSO AVAILABLE

Save more money by demanding the most up-to-date security system and the related services under lease scheme.

# ALARM PROCEDURE



1. Detecting extraordinary event under any weather condition
2. Alarm arrives to the monitoring center operating round the clock
3. Armed patrol guards start promptly
4. Armed patrol guards arrive to the spot within moments
5. Guaranteed object protection

Give us a call, now!



Free of charge burglary alarm consulting on designing and installing video remote surveillance systems.

**+36 30 50-60-111**

[www.securitypatent.hu](http://www.securitypatent.hu)

[info@patentcsoport.hu](mailto:info@patentcsoport.hu)

